

COMPANY PRESENTATION



- **Company Profile**

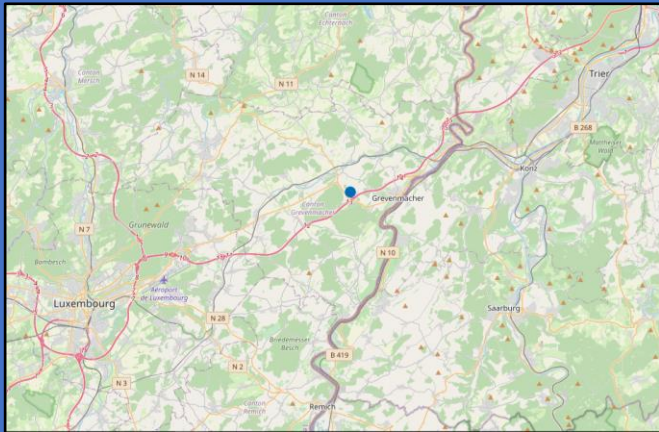
- Facts and Figures
- Production Area

- **Our Philosophy**

- **Product Range**

- Blast Furnace Units
- Steel Producing Industry
- Automotive
- Measuring & Testing Devices
- Conveyor Technique
- Mechanical Engineering & Manufacturing
- Engineering

Company Profile – Facts and Figures



Founded	1th October 1998
Share Capital	1.000.000 €
Legal Form	Société à responsabilité limitée
Management	Mario Kratz (Chief Executive Officer) Francis Gaspar (Chief Operating Officer) Uwe Bock (Chief Technology Officer) Rainer Zilliken (Managing Director VCL SA)
Turnover 2022	21 million €
Participations	STAC SAB Trading & Administration Company (Mother Company) VCL Valve Competence Luxembourg S.A (100 %) SAB Service S.à.r.l. (100%)
Employees of Group	120

Group Organisation Chart



Company Profile – Production Area



Factory 1

Production Area: 4500 sqm

Administrative Area: 700 sqm

6 cranes max. 32t



Factory 2

Production Area: 4500 sqm

Administrative Area: 700 sqm

6 cranes max. 40t

Our Philosophy

Our skilled and experienced employees solve the most difficult tasks through professional engineering and innovative ideas.

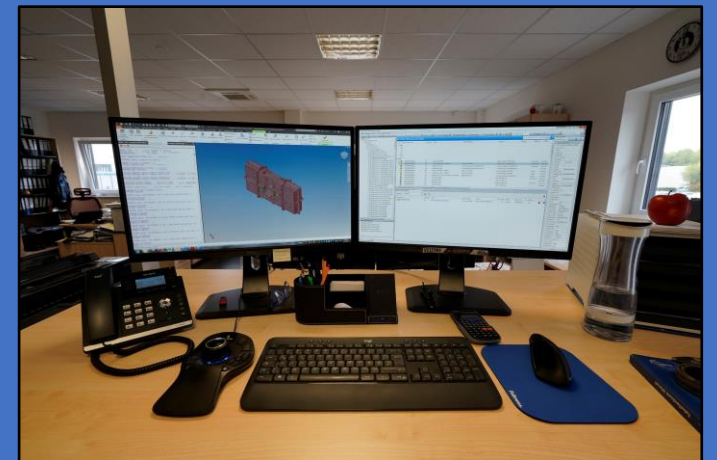
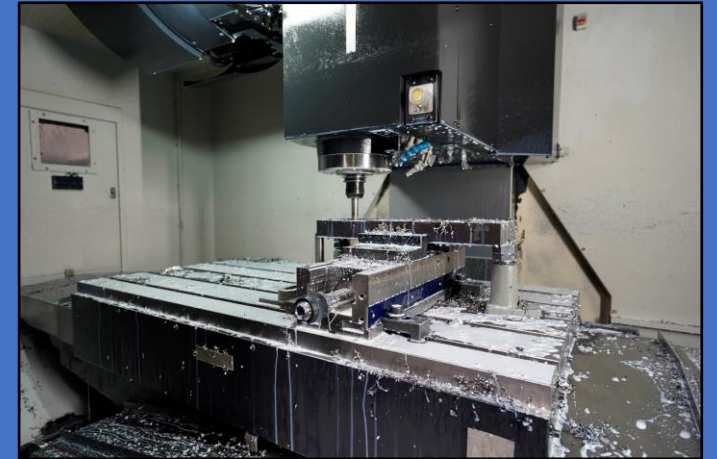
Our primary goal is to meet our customers individual wishes and requirements.

Therefore, every project is realized thoroughly and customer-orientated.

After the first meeting with the customer follows the detailed design and engineering work, then the high-quality manufacturing as well as the final assembly and testing. This proceeding is the guarantee for our sustainable high quality level.

We are certified according the official quality management system DIN EN ISO 9001:2015.

Realizing your visions is always a challenge we are proud to face.



Product Range: Blast Furnace Units

VCL - Valve Competence Luxemburg S.A.

is the sales

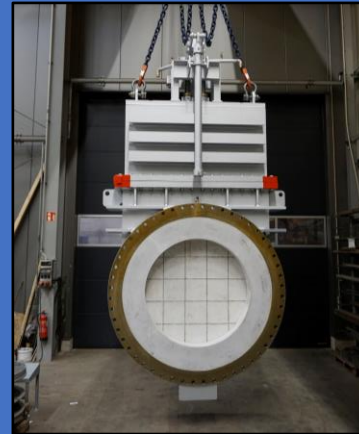
organisation for valves

in

Iron&Steel, Oil&Gas, Glas and Hydrogenvalves

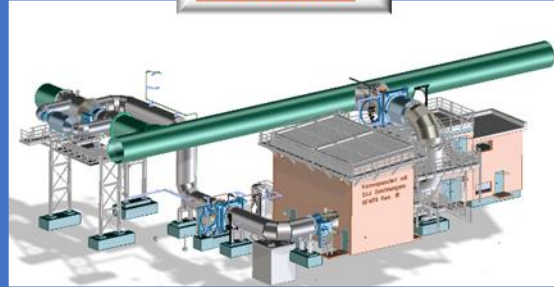
VCL Valve
Competence
Luxembourg

A COMPANY OF www.sab.lu



COWPER - BLAST FURNACE – TURBINE - GASHOLDER

TURBINE



BLAST FURNACE



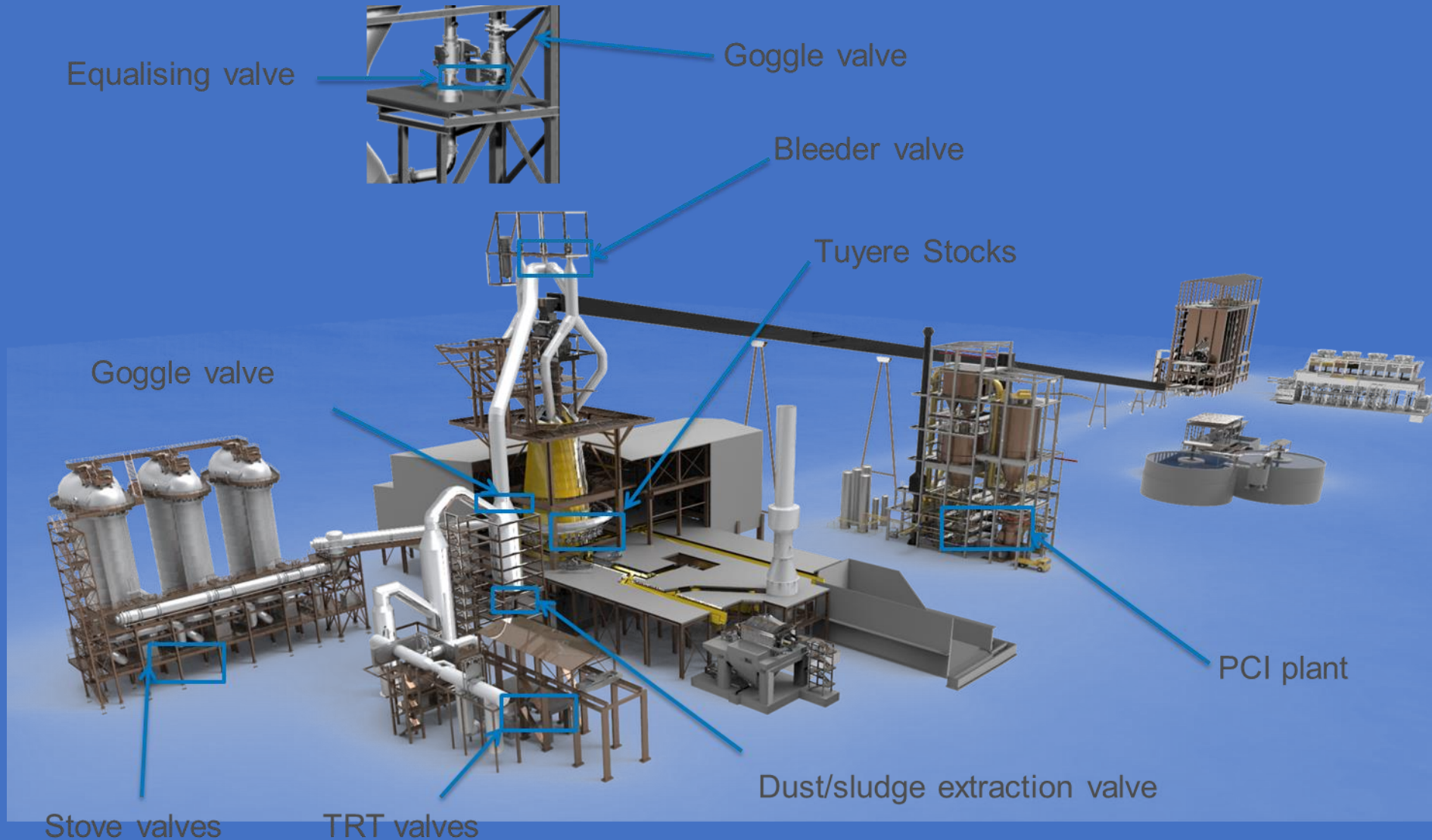
GASHOLDER



COWPER



BLAST FURNACE



Reference Customers:



Product Range: Steelwork

Due to our attractive cost structure and high quality level, we are supplier of well known customers of the steelmaking and refractory industry.

If you have any request in this area, we will gladly submit you a quote.



Bayonet Extractor



Guiding Rollers



Bayonet Catches

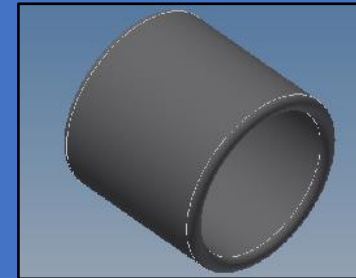
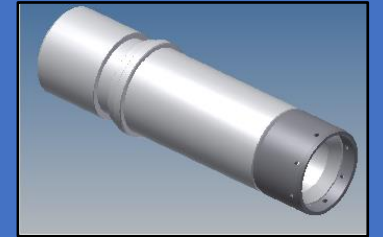


Together with our partner, ESB (Siegen, Germany), we supply many steelworks with assemblies.

Product Range: Automotive

Products:

1. - Manufacturing of production frames for glass industry
- Contract welding and repairs for industrial trucks and construction machinery
3. - Assembly of crawler vehicles for special uses for our partner TFW in Switzerland

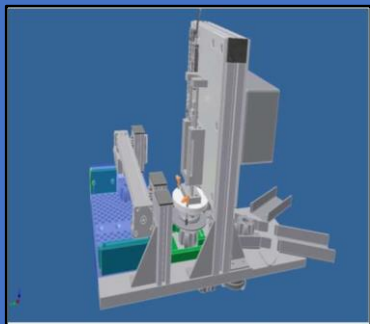


Product Range: Measuring & Testing Devices

A main focus of SAB is in the design and construction of measuring and testing devices for individual and series control for different parts of the industry.

The ball hub measuring device as an example:

- It is a complete in-house development of SAB for the serial control of ball hub. Special emphasis was placed on the possibility of seamless integration into production lines.



Measuring equipment systems

- Automated measuring units
- Test control units
- Clamping devices
- Special measuring equipment for axle and steering parts
- Special measuring equipment for vehicle joints
- Measuring devices for sample check

Process integration
-
Not just a word for us



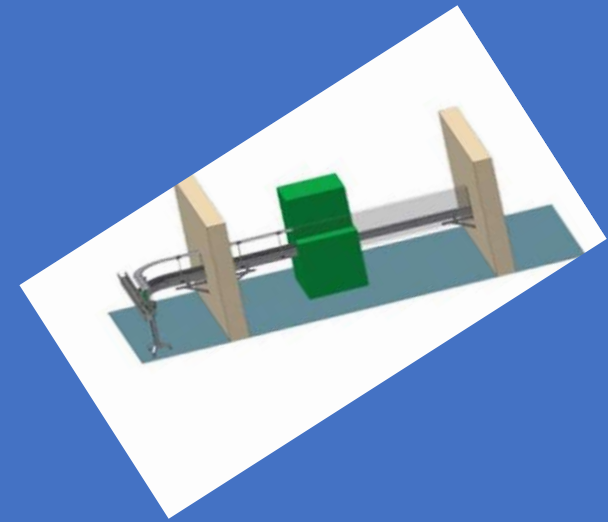
Product Range: Conveyor Technique

The conveyor systems designed by us are used for operational material flows in wet and dry areas, as well as for chain-linking production machines. Straight and curved flat-belt conveyors or conveyor belts made from plastic, steel and stainless steel are frequently used here.

Depending on the goods to be transported, hinged belt chains or roller-flight conveyors can be used.

A wide variety of conveyor systems is also available. Construction kit systems enable new combination options in the event of changes. We offer drives with frequency converters and soft start. The components can also be supplied with reversible design.

Conveyor systems optimise customized material flow systems



Your Vision – Our Challenge



Product Range: Mechanical Engineering & Manufacturing

Turning & Milling

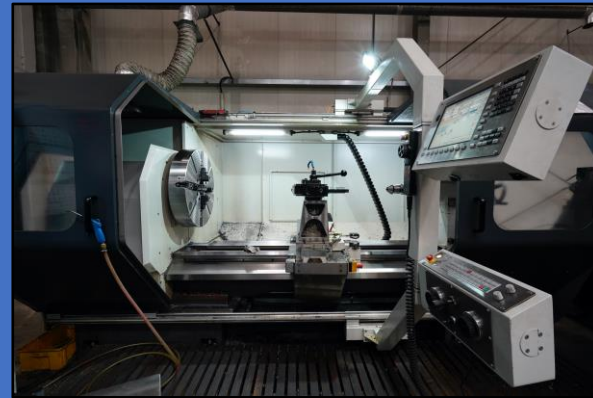
We strive to keep our machinery up to date and to expand it:

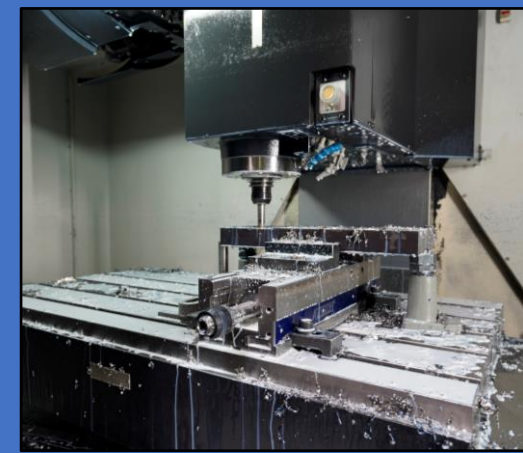
Turning Capacities:

➤ Max. Rod Ø:	145mm
➤ Max. Ø above bed:	1520mm
➤ Max. Ø above carriage:	1110mm
➤ Max. turning Ø	3000mm
➤ Max. length	2150mm
➤ Max. weight	12.000 kg
➤ Interpolar turning:	3500mm
➤ Max. weight	30.000kg

Milling Capacities:

➤ Max. X-axis	5000mm
➤ Max. Y-axis:	3500mm
➤ Max. Z-axis:	1500mm
➤ Max. W-axis:	800mm
➤ Max. weight	30.000 kg





Product Range: Mechanical Engineering & Manufacturing

Welding & Assembly

We perform the following welding processes:

- WIG
- MIG/MAG
- Hardfacing
- Submerged arc welding



QA System 2014/68/EU Module H1

Product Range: Engineering

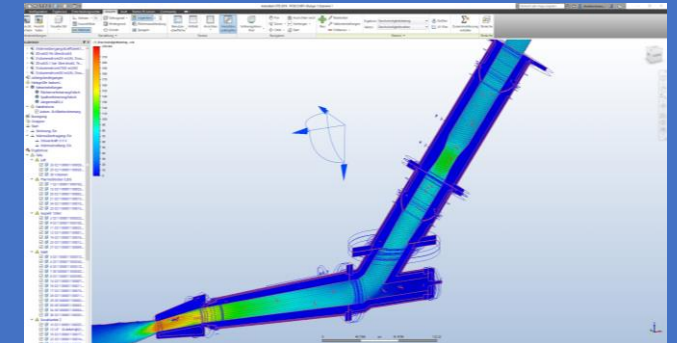
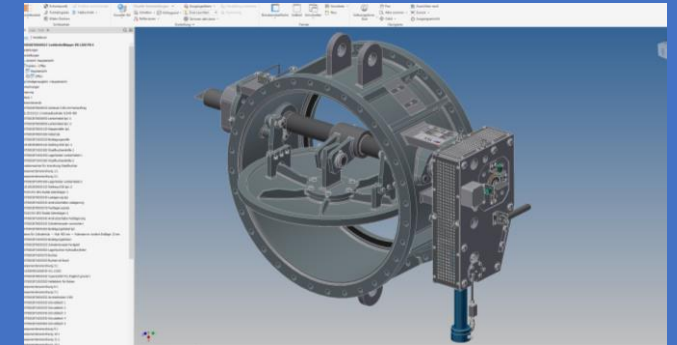
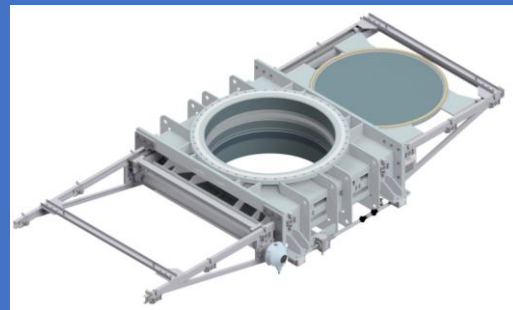
FROM CAD-ENGINEERING TO COMPLETE SERVICE

Our team stands for your technical innovation

With 3D modeling, simulation and visualization we accelerate the development and production processes and increase the quality at the same time.

We work with the latest CAD-Systems:

- Autodesk Inventor 2020
- Autodesk Vault Workgroup 2020
- AutoCAD Mechanical 2020
- Autodesk CFD 2020
- Autodesk Nastran 2020 (FEM)



Development

Construction

Documentation